



**RHIZOFLORA**  
INC

**BACKED BY  
SCIENCE.**

**DRIVEN BY  
RESULTS.**



# THE INNOVATORS BEHIND YOUR GARDEN SOLUTIONS

Rhizoflora, Inc. was created in 2014 for the purpose of creating new, innovative, and scientific horticultural products. Our goal is to deliver solutions that all cultivators can easily incorporate into their cultivation practices and actually see the benefits. At Rhizoflora, our customers are at the forefront of everything we do, and we strive to provide innovative products that exceed expectations – every time. It is our mission to continue researching and understanding plant physiology and make certain our products are working hard to enhance the gardening experience.

*“Our customers can trust Rhizoflora to create unique scientific-based products that deliver great results, every time – and exceed expectations.”*

– Dennis Hunter, President  
Rhizoflora, Inc.

# BENEFITS OF USING RHIZOFLORA FOR YOUR GROW

Rhizoflora products provide a unique combination of benefits to flowering and oil producing plants. The all-natural formulations promote the production of desired secondary metabolites increasing the concentration of terpenoids, flavonoids, and resin - enhancing the flavor, aromatics, color, and potency of the flowers. Rhizoflora's products contain no heavy metals or Plant Growth Regulators (PGRs), and are designed to easily be incorporated into any nutrient regimen.



- Increases terpene production
- Enhances aromas, flavors and potency
- Boosts trichome production
- Improves resin production



- Increases flavonoid and terpene production
- Enhances color, aromas, flavors and potency
- Boosts expression of purple pigments
- Improves trichome and resin production

# WHAT DOES TERPINATOR® DO?



## **TRANSPORTS**

After application, Terpinator travels to plant cells in direct contact with the outside layer of the plant.



## **STORES**

Terpinator is stored in plant cells until ready for use.



## **BUILDS**

Terpinator enhances plants ability to produce gland sites by being readily available as a building block for secondary compounds.



## **PRODUCES**

By providing the necessary building blocks for secondary compounds, trichome counts and productivity rapidly increases.



Terpinator is the original terpene and resin enhancer from Rhizoflora. It is formulated to provide the building block for secondary metabolites, increase the production of terpenes which improves the aroma, potency, and flavor of the flowers. Terpinator can be used with any nutrient line, and is compatible with soil, hydroponics, and soilless media.

# TERPINATOR® FEED CHART

Terpinator can be used during the entire life cycle of the plant.

**Vegetating phases of growth:** Add 5–10 ml per gallon of water.

**Reproduction and fruit-set stages of growth:** Add 10–30ml per gallon of water.

Terpinator won't burn plants and can be used with any growing media, fertilizer, or nutrient program.

Terpinator has a neutral pH.

Week	1 - 4	5 - 6	7 - 8	9 - 12+
Amount	5ml	10ml	15ml	25ml

- Terpinator can be fed as frequently as every watering.
- For deep water culture systems: change reservoir once every 3-5 days. Maintain aeration within the reservoir when using Terpinator.
- Safe for use in all fertilizer injectors
- Store in a cool, dry place, away from direct sunlight
- All measurements are per gallon of water
- DO NOT use as a foliar spray.



\*15 gal and 55 gal available by request

# WHAT DOES PURPINATOR® DO?



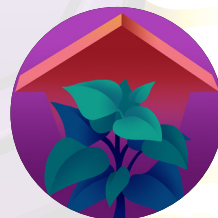
## **IMPROVES COLOR**

Purpinator helps by providing the building blocks for improved production of anthocyanins, which will improve the expression of purple colors in plants with purple phenotypes.



## **ENHANCES AROMATICS AND FLAVORS**

Purpinator improves the development of terpenes by providing the building blocks for terpene and secondary compound production.



## **IMPROVES POTENCY**

Increased capacity and number of trichomes promoted by using Purpinator will result in plant resins and oils with a higher concentration of terpenes and secondary compounds, leading to a more potent product.



Purpinator is designed to enhance the expression of purple in capable cultivars. It increases the production of flavonoids, which are plant pigments, and keeps the plant cells at a neutral pH, promoting the expression of the desired purple color. Like Terpinator, Purpinator provides the building blocks for secondary metabolites which increases the production of terpenes, leading to improved aromatics, flavors and potency.

# PURPINATOR® FEED CHART

Purpinator can be used during the entire life cycle of your plant.

**Vegetating phases of growth (Week 1-4):** Add 2-5ml per gallon of water.

**Early bloom phase of growth (Week 5-9):** Add 6-15ml per gallon of water.

**Late bloom phase of growth (Week 10+):** Add 20-30ml per gallon of water.

Purpinator won't burn plants when used as directed, and can be used with any growing media, hydroponic system, and nutrient program. Purpinator is at the correct pH for hydroponic use.

Week	1 - 4	5 - 9	10+
Amount	2-5ml	6-15ml	20-30ml

- Purpinator can be fed as frequently as every watering.
- **For deep water culture systems:** change reservoir once every 3-5 days. Maintain aeration within the reservoir when using Purpinator.
- Safe for use in all fertilizer injectors.
- Store in a cool, dry place, away from direct sunlight.
- All measurements are per gallon of water.
- **DO NOT** use as a foliar spray.
- Purpinator is a highly concentrated fertilizer at the limit of solubility - if crystalization occurs, shake or agitate well before use.



\*15 gal and 55 gal available by request



# RHIZOFLORA

INC



**TERPINATOR.COM**



**PURPINATOR.COM**



AVAILABLE IN THE US, CANADA, UK, EUROPE AND AUSTRALIA