



# GEOPLANTER®

## FOR ALL PLANTING NEEDS

- ✓ HEAVY DUTY
- ✓ GEOTEXTILE FABRIC
- ✓ FABRIC RAISED BED
- ✓ NO-TILL GROWING
- ✓ QUAD STITCH
- ✓ COMMERCIAL GROWING

The **GEOPLANTER** is a durable fabric raised bed with an included rigid PVC frame for all planting needs. Its breathable material allows for superior drainage and air root pruning, which encourages roots to branch out with more fibrous feeder roots that are much more efficient in taking up water and nutrients, leading to improved yields. The fabric is UV-stabilized for years of use in direct sunlight and requires no tools for assembly.



### AVAILABLE SIZES

See chart below or use the QR code to visit our website.

VISIT  
PRODUCT  
WEB PAGE



## WHY USE A GEOPLANTER

**GEOPLANTER'S** breathable fabric exposes root tips to dry air, air-pruning them and effectively stopping the roots' downward growth. This enables the plant to accommodate its established boundaries and start creating secondary feeder roots throughout the grow media rapidly - this results in more efficient water and nutrient uptake in your container garden from improved root growth. In living soil or organic soil systems, improved exposure to oxygen rich air helps feed bacterial populations to further improve nutrient uptake and availability, maximizing the efficacy of your soil.



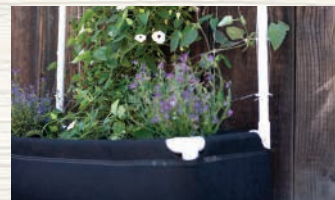
### GROW ON A PALLET

Perfect for reorganizing your space or filling and amending.



### CREATE A ROOFTOP GARDEN

Compatible with the most remote growing environments.



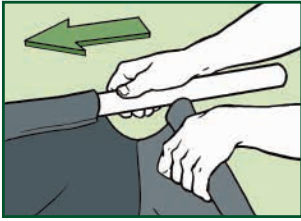
### ADD OUR TRELLIS KIT

Provide support and increased air and light exposure.

### AVAILABLE SIZES:

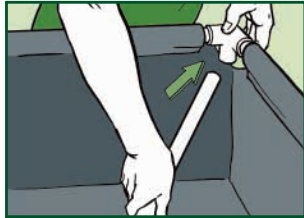
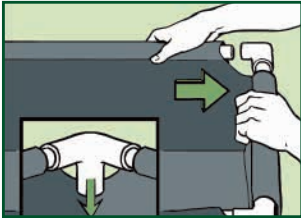
DESCRIPTION	CAPACITY (GALLONS)	DIMENSIONS
Small Rectangular Planter	35 Gallons Capacity	36" W x 16" L x 14" H
Square Planter	120 Gallons Capacity	48" W x 48" L x 12" H
Pallet Planter	116 Gallons Capacity	40" W x 48" L x 14" H
Large Rectangular Planter	157 Gallons Capacity	72" W x 36" L x 14" H
XL Rectangular Planter	240 Gallons Capacity	48" W x 96" L x 12" H





### EASY ASSEMBLY

Get ready to grow in minutes with no tools required!

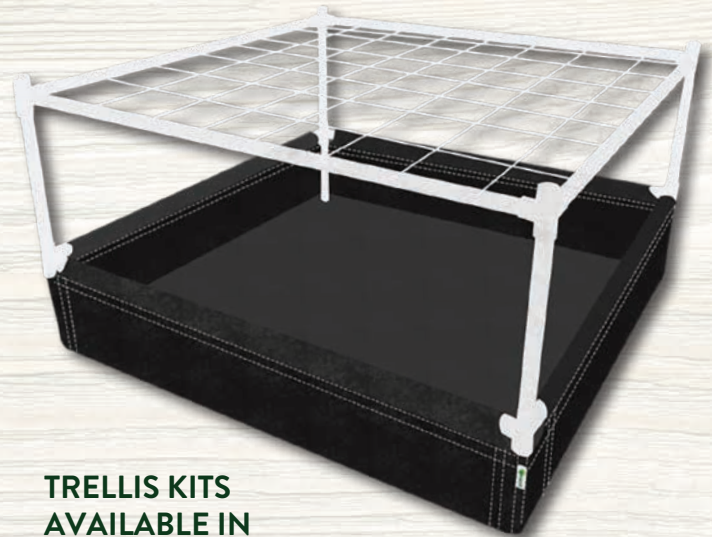


## GEOPLANTER® ACCESSORIES

### ACCESSORY OPTIONS

**GEOPLANTER TRELLIS KITS** allow you to easily convert your GeoPlanter into a SCROG system for a cleaner, more manageable canopy. Each kit contains replacement fittings, trellis, and zip ties. Just add ¾" PVC in the height you need into the 4-way fittings provided, and fit the trellis to the supports, and you are ready to grow.

**5-WAY FITTINGS** and replacement fittings are also available upon request.



**TRELLIS KITS  
AVAILABLE IN  
4'X4' AND 4'X8' SIZES**

### KITS & ACCESSORIES

DESCRIPTION	FITS	NOTES
Trellis Kit - 4' x 4'	Fits planters up to 48" wide	Includes 4-Way fittings, 4'x4' Trellis, zip ties
Trellis Kit - 4' x 8'	Fits Planters up to 96" wide	Includes 4-Way fittings, 4'x8' Trellis, zip ties
3-Way PVC Fittings	Fits all Planters	Replacement Corners
4-Way PVC Fittings	Fits all Planters	Replaces 3-Way Corners
5-Way PVC Fittings	Fits Planters over 48" wide	Replaces 4-Way center brackets