



## DISEASE & FUNGAL CONTROL



SIERRA  
NATURAL  
SCIENCE

[WWW.SIERRANATURALSOURCE.COM](http://WWW.SIERRANATURALSOURCE.COM)



FOR ORGANIC  
GARDENING

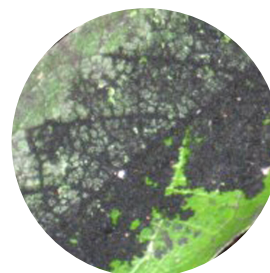
## HOW IT WORKS

SNS DC smothers the microbial cell wall providing preservatives and inhibitors that prevent fungus, bacteria and molds from decomposing the plant cell wall.

## PESTS

DC Controls disease and fungi like black mold, leaf rust, mildew, bacterial blast & more.

Black Mold



Powdery Mildew



Rust



Blight



## BENEFITS

- Removes materials that microbes depend on to colonize
- Prevents fungus, bacteria and molds from attacking the plant cell wall
- Can be used on organic production
- 0-Day re-entry interval, EPA Exempt

## APPLICATION INSTRUCTIONS

### MIXING DC

Shake well before mixing. Mix 3-8 oz of concentrate per gallon of water.

### FOLIAR SPRAY

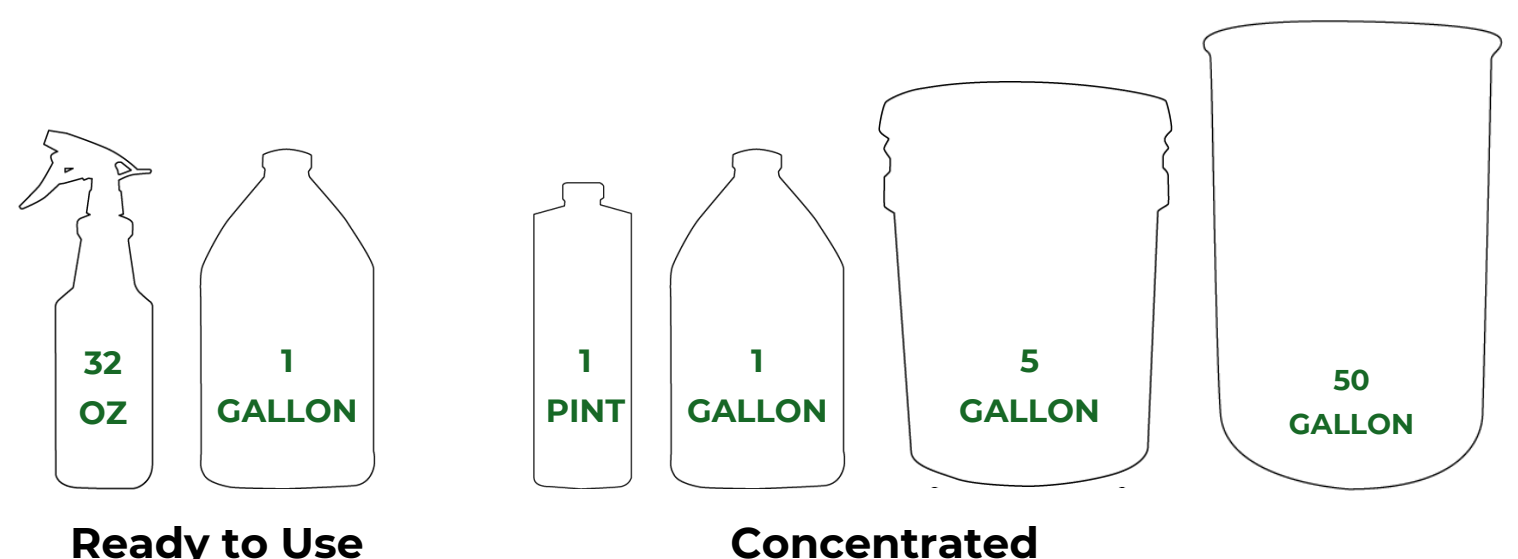
Spray all plant parts. Spraying lightly on top of the soil may be helpful in reducing unwanted yeast and molds.

### ROW CROPS

Mix 2-6 quarts per acre. Feed solution onto the root area every time you water until infestation reduces.

USE DC EVERY 7-14 DAYS FOR PREVENTATIVE MAINTENANCE. REFER TO THE SUPPLEMENTAL LABEL & USE GUIDE.

## SIZES AVAILABLE



Contact our sales team for available bulk sizes