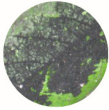




# DISEASE & FUNGAL CONTROL

## DISEASE & FUNGAL PROBLEMS

Black Mold



Leaf Rust



Powdery Mildew



Blight



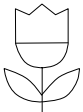
Bacterial Blast & more

## HOW IT WORKS

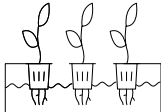
SNS DC smothers the microbial cell wall in preservatives and inhibitors that prevent fungus, bacteria and molds from decomposing the plant cell wall.

## WHERE TO USE

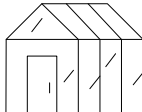
GARDEN



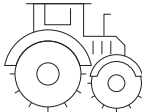
HYDROPONICS



GREENHOUSE



AGRICULTURE



## SIZES AVAILABLE



Ready to Use



Concentrated

Contact our sales team for available bulk sizes

Always refer to product labels

**O-Day REI**   
(Re-Entry Interval)

**SAFE AROUND CHILDREN & PETS**   
WHEN USED AS DIRECTED

**EPA Exempt**   
FIFRA 25(b)

**OMRI LISTED**  
For Organic Use - OMRI.org

**Mixing Compatibility**



## APPLICATION

### Mixing DC

Shake well before mixing.  
Mix 3-8 oz. of concentrate per gallon of water.

### Foliar Spray

Spray all plant parts (leaves, stems, stalk, crowns & other). Spraying lightly on top of the soil may be helpful in reducing unwanted yeast and molds.

### Row Crops

Mix 2-6 quarts of concentrate per acre. Feed solution onto the root area every time you water until affected area is reduced.

Use DC every 7-14 days for preventative maintenance. Refer to the supplemental label & use guide